

# YELLOW MEDICINE COUNTY

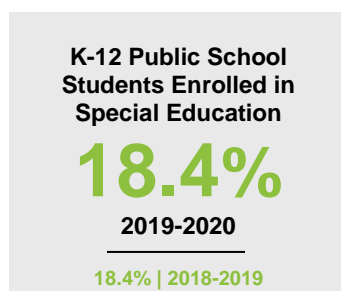
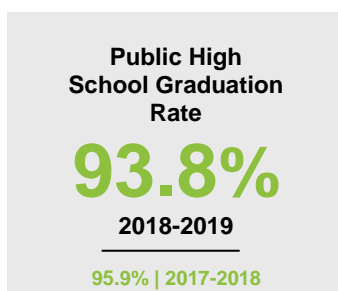
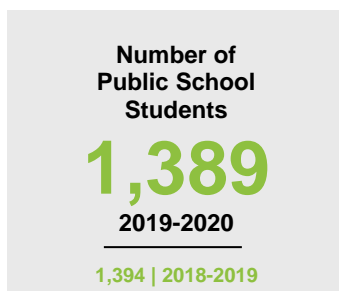
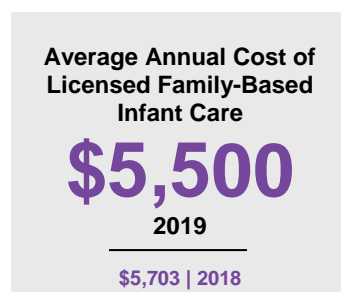
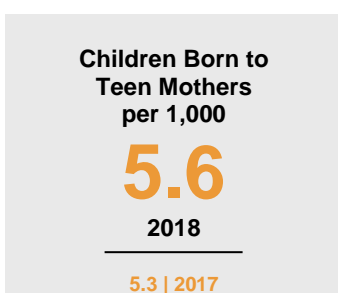
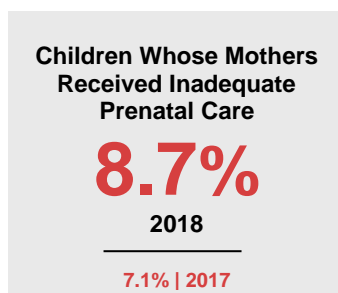
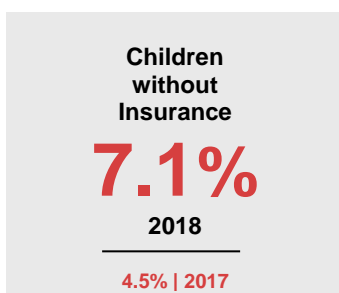
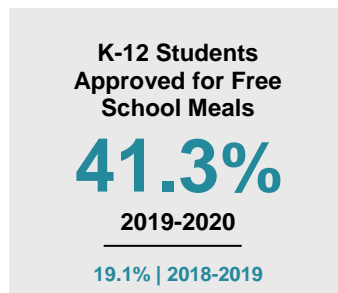
## 2020 COUNTY FACT SHEET

### Minnesota

Child Population: **1,269,824**  
 Birth Rate per 1,000: **12.0**  
 Median Family Income: **\$86,204**

### Yellow Medicine

Child Population: **2,229**  
 Birth Rate per 1,000: **11.5**  
 Median Family Income: **\$69,978**



KIDS COUNT is a project of the Annie E. Casey Foundation. CDF-MN publishes an annual Minnesota KIDS COUNT Data Book to share trends in child well-being and foster discussion on data-driven solutions to improve child outcomes. To access the Minnesota KIDS COUNT Data Book and all county fact sheets, visit [www.cdf-mn.org](http://www.cdf-mn.org).



**children's defense fund minnesota**